

STZUE · STEEZWARE ULTRAEDIT TOOL KIT

INSTALLATION INSTRUCTIONS

VERSION 2020-04

16 FEBRUARY 2021 BY SCOTT McDONELL

INTRODUCTION

There is no installer program for stzUE v2020-04, so you must perform several manual steps to install and set up the tools, all of which are explained in this document.

The following worksheet provides an overview of the installation process, with each step thoroughly covered on the following pages. Note that the steps you perform will vary based on if you have or do not have stzUE currently installed on your system...

- This is the **first time** you are installing any version of stzUE
- You currently have an installation of stzUE **earlier than v2020-04**
- You currently have **v2020-04 or later** installed on your PC

Step	✓	
All Installs · First Time and Upgrades		
1		Purchase or Upgrade to UltraEdit Version 26
2		Copy the Installation Zip File to the c:\ Drive
3		Create a Desktop Shortcut to Run UltraEdit
Upgrade from stzUE Earlier than v2020-04		
4-1		Copy the stzOptions.sw1 Settings File from c:\steezware\common to c:\steezwareUE
4-2		Copy the Entire 'savedSearches' Folder from c:\steezware to c:\steezwareUE
4-3		Migrate User-Defined Warnings
4-4		Copy the Save Override Program
4-5		Copy Owner Code Programs
4-6		Migrate Macros
4-7		UltraEdit Project
Upgrade from stzUE v2020-04 or Later		
5		Upgrade from a Version of stzUE v2020-04 or Later
6		Test the Installation

STEP 1 · ULTRAEDIT VERSION 26

PURCHASE OR UPGRADE TO ULTRAEDIT VERSION 26

stzUE v2020-04 was developed and tested using UltraEdit version 26. If you are using an earlier version, it is highly recommended that you upgrade before using the stzUE tools.

- ✓ steeware makes no assertion that the stzUE tools will correctly function on any version of UltraEdit lower than version 26.

IDM now offers an affordable annual subscription that you can learn more about here...

<https://www.ultraedit.com/register-buy/subscriptions.html>

- ✓ Several years ago, steeware purchased lifetime licenses to UltraEdit and UltraCompare which have paid for themselves many times over. The lifetime license is still available - contact IDM for more details.

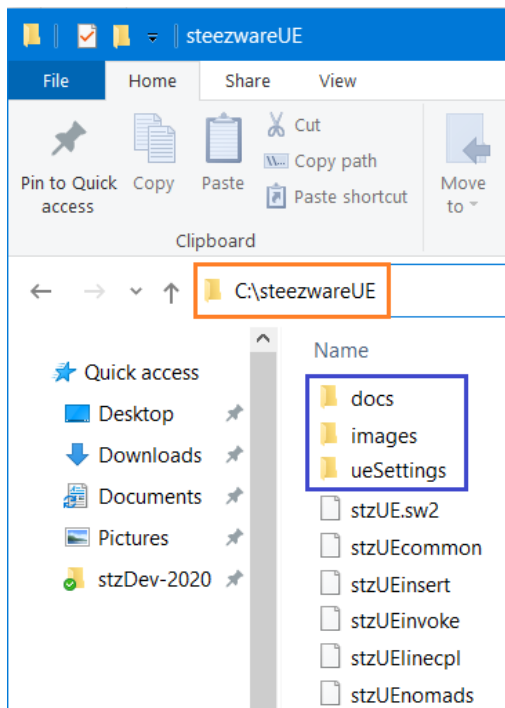
STEP 2 · INSTALL THE ZIP FILE

COPY THE INSTALLATION ZIP FILE TO THE C:\ DRIVE

Version 2020-04 stzUE requires that its programs and files be installed in the **c:\steewareUE** folder.

Copy the entire steewareUE folder from the zip file to the c:\ root drive. After the copy, you should have the following folders...

- c:\steewareUE
- c:\steewareUE\docs
- c:\steewareUE\images
- c:\steewareUE\ueSettings



- ✓ If you are upgrading stzUE do not remove the existing c:\steezware folder.

STEP 3 · ULTRAEDIT SHORTCUT

CREATE A DESKTOP SHORTCUT TO RUN ULTRAEDIT

stzUE v2020-04 requires the c:\steezwareUE\ueSettings folder be used as the location for the UltraEdit INI file, macros, themes and other settings.

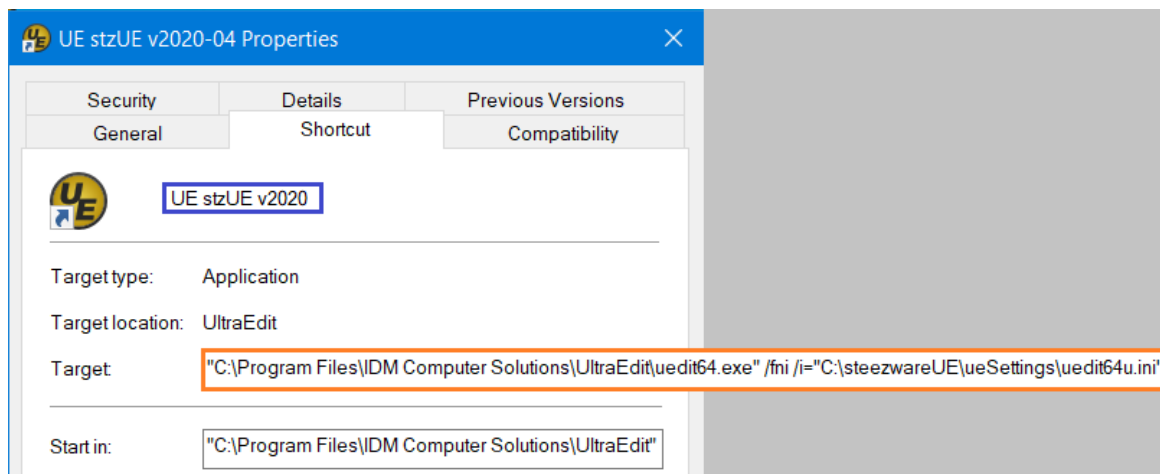
This folder is included in the zip file steezwareUE folder installed in [Step 2](#).

- ✓ If you have an existing installation of UltraEdit, do not modify desktop shortcuts that run UE, rather, create a new shortcut as described below. With both the existing and a new shortcut, you can test stzUE by switching back and forth from your current UE setup to the new v2020-04 stzUE setup.
- ✓ To copy an existing UE shortcut, right-click on it, select Copy, click elsewhere on the desktop and select Paste. Rename the new shortcut – to 'UE stzUE v2020-04', for example – then change the shortcut Target property as described below in Step 4.1.

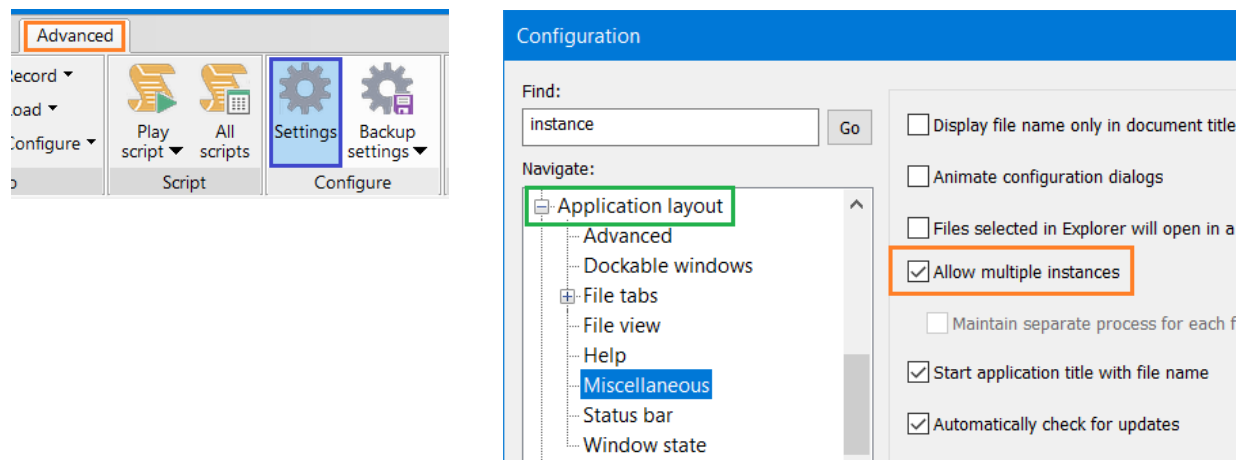
STEP 3-1 · CREATE AN ULTRAEDIT DESKTOP SHORTCUT

Create an UltraEdit shortcut named "UE stzUE v2020" with its 'Target' including the `/i=` argument which causes UE to use the INI file located in the steezwareUE\ueSettings folder. Note that the path to the uedit64.exe executable shown below may differ on your system.

```
"C:\Program Files\IDM Computer Solutions\UltraEdit\uedit64.exe"  
/i="C:\steezwareUE\ueSettings\uedit64u.ini"
```



- ✓ The target in the above screenshot includes the `/fni` (force-new-instance) argument that causes a new instance of UltraEdit to execute when the shortcut is run. For UltraEdit to use the `/fni` argument to invoke separate instances, you must define this in UE settings...



STEP 4 · UPGRADE FROM A VERSION OF STZUE EARLIER THAN v2020-04

- ✓ If you are installing stzUE for the first time, skip this section and go to [Step 6](#).
If you already have v2020-04 or later installed, skip this section and go to [Step 5](#).

STEP 4-1 · COPY THE STZOPTIONS.SW1 SETTINGS FILE FROM C:\STEEZWARE\COMMON TO C:\STEEZWAREUE

v2020-04 uses the same settings file as previous versions of stzUE. You can migrate your project and other settings by copying stzOptions.sw1 to the new root c:\steezwareUE folder – there is no ‘common’ folder in v2020-04, so the file simply goes into c:\steezwareUE.

STEP 4-2 · COPY THE ENTIRE ‘SAVEDSEARCHES’ FOLDER FROM C:\STEEZWARE TO C:\STEEZWAREUE

The stzUE Search tool has a feature that saves search options which can be reloaded and used at another time. If you have any Search saved settings that were saved...

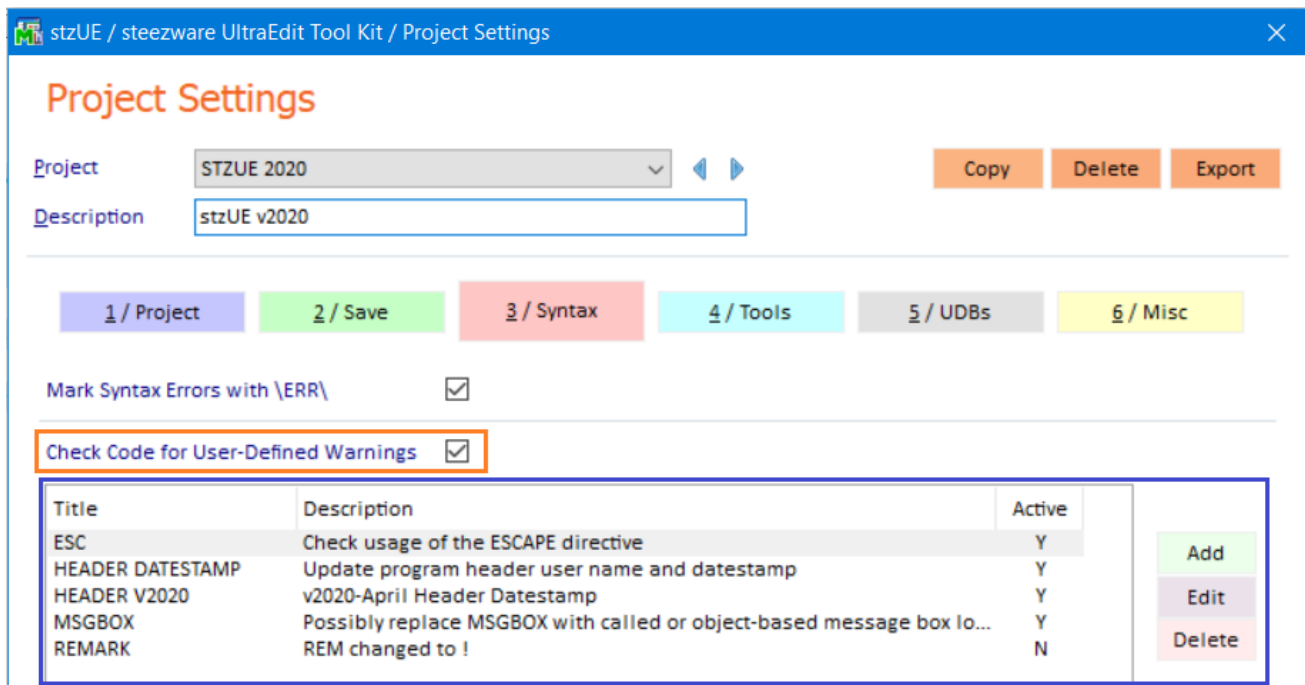


...they are stored in the ‘c:\steezware\savedSearches’ folder. Copy the entire ‘savedSearches’ folder to c:\steezwareUE to make these saved searches available in v2020-04.

STEP 4-3 · MIGRATE USER-DEFINED WARNINGS

Prior to v2020-04, warnings and substitutions done by the Save tool are defined in a text file named stzUEwarnings.txt, found in the c:\steezware\install folder. Beginning with v2020-04, the warnings are stored in the stzOptions.sw1 settings file, and they are maintained in Project Settings on the 3/Syntax panel.

If you have warnings that you added to c:\steezware\install\stzUEwarnings.txt, you must manually add them in Project Settings – there is no support for importing the old warnings.



✓ The User Manual has been updated to detail all aspects of configuring the new user-defined warnings.

STEP 4-4 · COPY THE SAVE OVERRIDE PROGRAM

If you are using the stzUESaveovr program to override the Save tool logic, you must copy it to c:\steezwareUE. Earlier versions of stzUE expected the program path/name to be c:\steezware\install\stzUESaveovr.src, but v2020-04 expects the program to be in the c:\steezwareUE folder with no file extension – and compiled as a program for optimal performance.

STEP 4-5 · COPY OWNER CODE PROGRAMS

If you created any special owner code programs, such as stzUESave-123.cp1 or stzUESave-123.cp2, move them from c:\steezware to c:\steezwareUE.

STEP 4-6 · MACROS

NEW VERSION DOES NOT HAVE **MACROS** (ALT-X) THAT USERS CREATED PREVIOUSLY – DOCUMENT HOW TO MIGRATE THEM

STEP 4-7 · ULTRAEDIT PROJECTS

NEW VERSION DOES NOT HAVE PREVIOUS VERSION **PROJECTS** – DOCUMENT HOW TO OPEN THEM IN UE

STEP 6 · UPGRADE FROM A VERSION OF STZUE v2020-04 OR LATER

✓ If you are installing stzUE for the first time, skip this section and go to [Step 7](#).

STEP 6-1 · COPY THE STZOPTIONS.SW1 SETTINGS FILE FROM C:\STEEZWARE\COMMON TO C:\STEEZWAREUE

Stay tuned...

STEP 7 · TEST THE INSTALLATION

Stay tuned...

Set Up UE Tools

Describe interpreter used by stzUE vs compiler interpreter:

It is important to understand the difference between the interpreter used by stzUE and an interpreter used to save programs and perform other functions in UltraEdit.

The stzUE tools require an interpreter whose path and name are declared in an environment variable, which is explained below. Each stzUE project you create can use this interpreter or a different interpreter. For example, the Save tool is invoked using the stzUE interpreter specified in the environment variable, but it then invokes an overlay using the interpreter specified in the stzUE project, so your program is compiled using the correct interpreter. The same goes for the stzUE Nomads tool... its first overlay is run using the *stzUE* interpreter and it then runs a second overlay using the *project* interpreter, so that the Nomads interface you are presented is for the version of Pvx that is suited to the project you are working on.

Previous versions of stzUE were coded using PxPlus but note that v2020-04 of stzUE was developed entirely with the 9.61 Windows version of ProvideX, the interpreter that ships with Sage 100 2019. The stzUE tools should run properly on a current release of PxPlus, and possibly on earlier versions of ProvideX, but keep in mind the v2020-04 tools were not tested with any interpreter other than Pvx 9.61.